



EASTSIDE
MUSIC
SCHOOL



Eastside Music School

New Student Guide

Custom Tailored Music Lessons for Students of all Ages and Levels



Welcome

Congratulations on taking the next step on your musical journey. Our mission is to get you playing the music you love as soon as possible. From your first lesson, your teacher will listen to your goals, tastes and experiences to help design a plan tailored to your learning style and ability. Whether you have specific goals in mind or simply want to explore music in a nurturing and welcoming environment, we're excited to work with you at Eastside Music School!

Our promise to you:

With just one lesson per week and 15 minutes of daily practice, you'll learn to sing or play an instrument in three months or less.

What We Offer



Lessons at our School

Eastside Music School is located in a historic, wood-adorned building in downtown Austin. Our lesson rooms are fitted with beautiful Steinway and Yamaha pianos, a plethora of acoustic and electric guitars, and the latest in modern technology to facilitate the best possible learning experience.

Virtual Lessons

We offer virtual lessons for students interested in learning from the comfort of your their own home. Lessons take place over Zoom and our teachers use high speed internet connections, HD cameras, and great lighting to bring the instruction to you.



What to Expect in Your First Lesson

HELLO

Get to know your teacher and talk about your musical background and tastes.



ASSESSMENT

Discuss your starting point and establish goals.



TAILORED PLAN

Your teacher will create a personalized plan to help you meet your goals and play the music you love.

Our Program

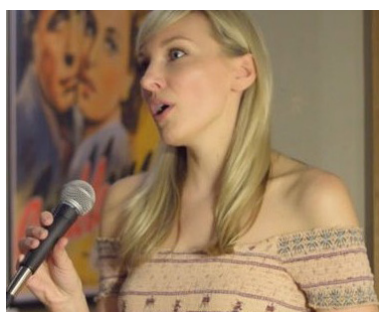


Private Lessons

Private lessons are the core of our program. Lessons are tailored to meet your goals, ability and learning style. You'll learn to play songs you love while developing your technique and understanding of music.

Group Classes

Learn music in a fun and social environment. Group classes are a great way to meet like-minded students and gain experience playing with others under the guidance of an Eastside teacher.



Performance Opportunities

Performance opportunities include twice yearly recitals as well as monthly open mic nights. These optional events are a great goal to work towards in lessons.

Recording Studio

Take your music to the next level in our professional recording studio. Record a demo or audition tape with the help of our studio engineer. Students get a studio discount.



Plan Comparison

| DESCRIPTION | WEEKLY LESSONS | BI-WEEKLY LESSONS | LESSON PACKAGE | SINGLE LESSON |
|---------------------------|----------------|-------------------|----------------|---------------|
| Pay Per Lesson | | | | ✓ |
| Price Discount | ✓ | ✓ | ✓ | |
| Priority Scheduling | ✓ | | | |
| Monthly Billing | ✓ | ✓ | | |
| Group Class Discount | ✓ | | | |
| Performance Opportunities | ✓ | | | |
| Recording Studio Discount | ✓ | | | |

Lesson Length

30 Minutes

- Great for children and beginners
- Each lesson includes warmups, review of material from previous week and introduction of new concepts and techniques as student progresses

45 Minutes

- Great for adults and students with some experience
- Lessons include topics and concepts covered in 30-minute lessons
- Additional time allocated for student to develop skills and receive specific feedback

One Hour

- Great for intermediate to advanced students focused on specific goals
- Students dive deep into concepts and skills
- Students have ample time to ask questions and demonstrate mastery of repertoire

PRICING

Weekly Lessons

Most students enroll in weekly lessons. This is the surest path to success for students at any level. You'll have one lesson per week at the same day and time with your teacher. As a bonus, weekly students enjoy tuition discounts and priority scheduling.

| Duration | Cost per Month* | Cost per Lesson |
|----------|-----------------|-----------------|
| 30 min | \$200.00 | \$50.00 |
| 45 min | \$264.00 | \$66.00 |
| 60 min | \$316.00 | \$79.00 |

*Based on a 4 week month. Tuition may vary if there are more or fewer lessons in a given month.

Package of 4 Lessons

Lesson packages are great for students whose schedules don't allow for consistent weekly lessons. Prepay for four lessons to receive a discount and schedule at your pace.

| Duration | Package Cost | Cost per Lesson |
|----------|--------------|-----------------|
| 30 min | \$200.00 | \$50.00 |
| 45 min | \$264.00 | \$66.00 |
| 60 min | \$316.00 | \$79.00 |

Pay Per Lesson

The pay per lesson option is great for students who want the occasional check-in or just want to brush up on a specific skill or concept.

| Duration | Cost per Lesson |
|----------|-----------------|
| 30 min | \$55.00 |
| 45 min | \$70.00 |
| 60 min | \$85.00 |

POLICIES ---

Billing: Tuition is billed at the beginning of each month in advance of upcoming lessons and due by the 5th day of the month. Students have the option to enroll in autopay, pay their bill online (via the invoice), or in person. A \$25 late fee will be incurred for tuition that is two weeks overdue.

Cancellation Policy: Requests must be made by emailing scheduling@eastsidemusic.com by 8pm the evening before your lesson. Students receive a makeup credit for the missed appointment which may be used for any lesson or class offered at Eastside Music School. *Make-up credits are not deducted from future tuition bills.*

Same-day Cancellations: "No-shows" and same-day cancellations will be subject to the full lesson fee.

Withdrawal: Please give at least one week written notice if you wish to withdraw from lessons. You will be expected to finish the current monthly billing cycle. Every effort will be made to conclude lessons on a positive note and to set you up for success with music after discontinuing lessons at Eastside Music

Running Late: Please call the school if you're running late. After 15 minutes the student will be marked as "no-show" for the lesson.

Communication: Please communicate with your teacher and the school if you're experiencing problems in lessons or not progressing as expected. We'll make every effort to accommodate your needs.

Substitutes Occasionally we may use substitutes if your teacher is away. We'll contact you ahead of time to confirm whether you're comfortable with a sub or would rather hold off until your teacher returns.

Virtual Lessons: Please give at least two hours notice if you wish to switch your in-person lesson to a virtual appointment. This is to ensure our teachers have the proper equipment to teach virtually.

Contact

Questions?

We're here to help! Our dedicated Studio Managers are available during our business hours to assist you with scheduling, billing, virtual assistance, and more.

How to Find Us

Enter from the furthest west entrance to the 501 Studios building on E 5th Street. Accessing the Building The 501 Studios building is locked on weekdays after 5:00 PM and on weekends. If you have a lesson scheduled during this time, a Studio Manager will greet you at the door. You may also ring the doorbell if no one is present.

Parking

Free, validated parking is offered in the Corazon Garage (see map). Eastside Music will validate for your lesson length plus 15 minutes. Additional time must be paid upon exiting the garage (\$5 per hour). Paid street parking is also available. Please do not park in the 15 minute short term parking in front of the building.



Our Address

501 North IH35 STE 107
Austin, TX 78702
(512) 777-1444
scheduling@eastsidemusic.com



Business Hours

Mon - Thurs: 11:00am - 8:00pm
Friday: 11:00am - 5:00pm
Saturday: 9:00am - 5:00pm
Sunday: By Appointment



Parking Garage

Corazon Garage
505 San Marcos St
Austin, TX 78702

